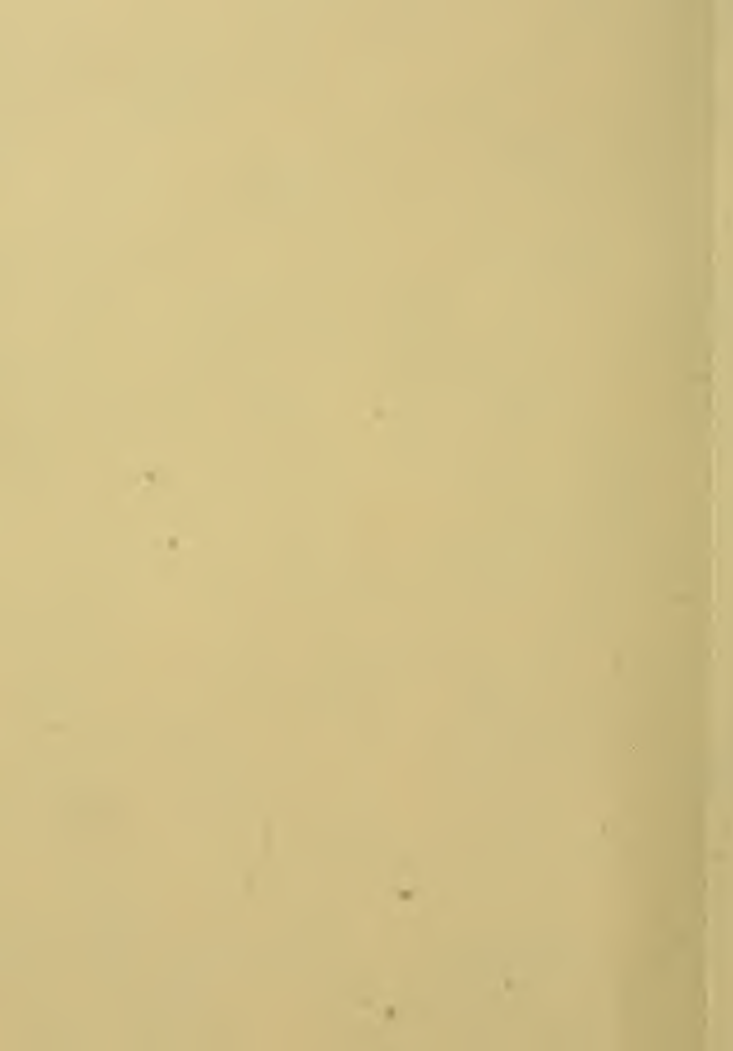


F 74

. L 98 L 983



F 74
L98
983
Copy 1

The Lynn



CITY HALL

MANUAL AND ESSEX COUNTY ROAD BOOK.



CITY OF LYNN

LEFSAEHLER
PUBLISHER



ADDITIONAL

1/25.9
16 D

REVERE CIGARS.



Finest, Sweetest, Most Pleasing

*Manu-
es*

LIBRARY OF CONGRESS.

high-

Chap. F14 Copyright No.

Shelf L98 L983

UNITED STATES OF AMERICA.

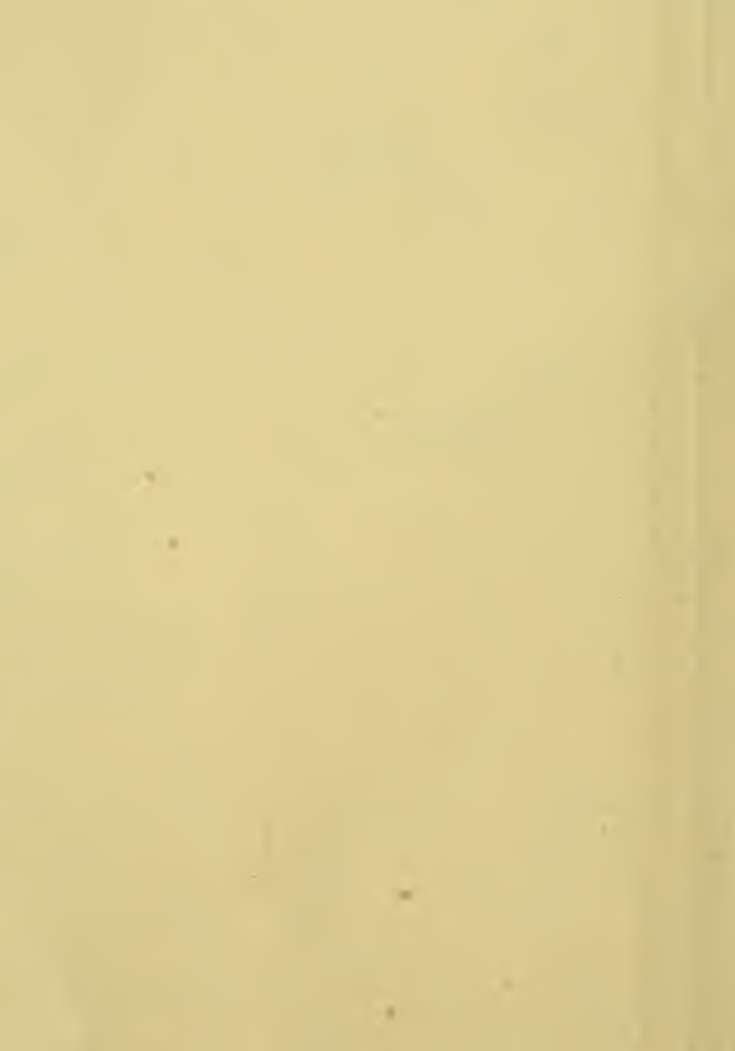
Th sold
for 5 CENTS. The highest cost Cigar
ever sold for 5 cents, costing a third more
to manufacture than any other 5-cent Cigar.
Sold for less profit by manufacturer and re-
tailer than any other Cigar, hence you get
value for your money. Everyone keeps
them.

HOWARD W. SPURR & CO.,

Proprietors of above brands.

Boston, Mass.





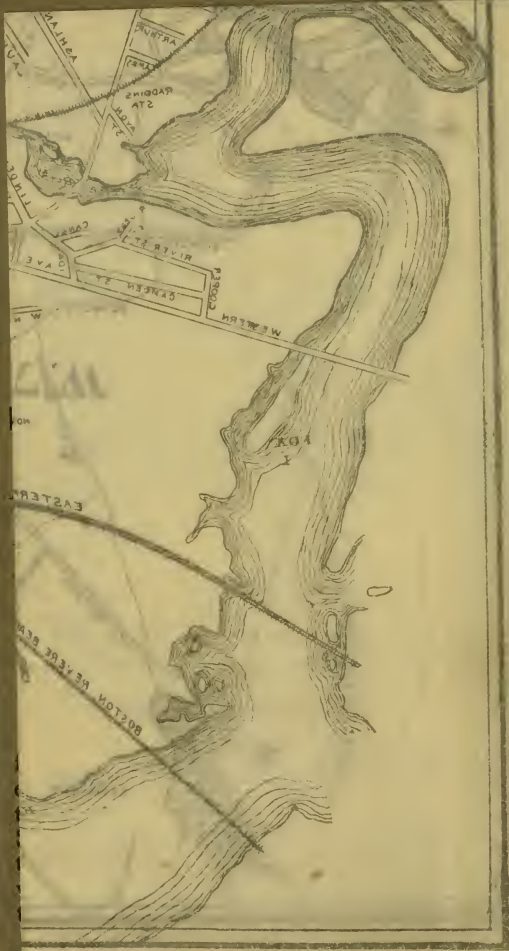
CITY OF LYNN

REGISTERED COPYRIGHT FOR
THE LYNN MANUAL

AND
ESSEX COUNTY ROAD BOOK.

Published by E. F. BACHELLER, Lynn, Mass.





ASHMUN

ADAMS
RUGGLES
STATE

CABOT

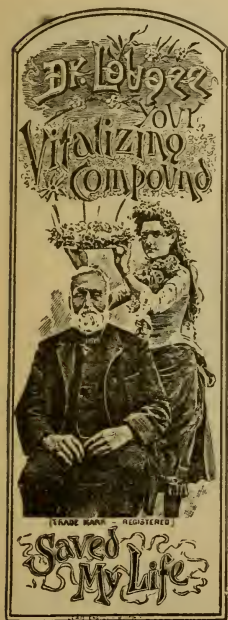
RIVER ST
GREEN ST
WESTERN

EASTERN

BOSTON REVERE

LOOK Y

❖ A GREAT REMEDY ❖



Dr. R. W. Lougee's

JUNIPER

KIDNEY CURE

is confidently placed before the public

AS EQUAL, IF NOT SUPERIOR,
to anything of the kind
in the market. Its action
is prompt and effectual.
Try it and be convinced.

PRICE, ⦿ \$1.00 ⦿ A ⦿ BOTTLE.

—◆◆◆—
All Druggists.

HOUSEKEEPERS OF ESSEX COUNTY

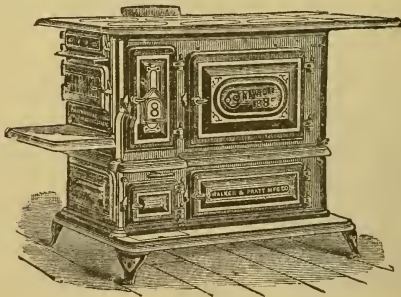
ARE CORDIALLY INVITED TO VISIT THE

House-Furnishing Establishment

— OF —

THE L. A. MAY CO.,

281-289-293 UNION STREET, LYNN, MASS.



THREE CONNECTING STORES.

PLUMBERS & TINSMITHS.

*Goods to the amount of \$5 and upwards delivered at
any R. R. Station in Essex Co.*

CASH or INSTALMENTS.

“The Pistol and Revolver,”

A BOOK OF 137 PAGES

— OF —

Practical Information for Pistol Shooters.

\$1.00 a copy.

A. C. GOULD & CO.,

Publishers,

4 EXCHANGE PLACE, BOSTON, MASS.

HOLDER ✦ & ✦ CO.,

APOTHECARIES,

No. 119 Broad Street,

LYNN, ✦ ✦ ✦ ✦ MASS.

A. D. WALLACE & CO.,



Boarding, Livery & Sale Stable,

WASHINGTON SQUARE.

LYNN, - MASS.

Established 1848.

— o o o —
BREED & CO.,

— DEALERS IN —

HORSE SUPPLIES OF ALL KINDS

No. 1 Hay, New York Straw, and
 Fancy Clipped Oats

always on hand. Prices right.

RICHARD BREED. }
 CHAS. ORRIN BREED. } **750 Western Ave., West Lynn.**

Near B & M. R. R. Depot.

H. GOLDBERG,

Merchant Tailor,

No. 72 Market Street, Lynn, Mass.
Old No. 66.

Ladies' Tailor Made Garments a Specialty.

JOSEPH E. HUSE,
184 BROAD STREET, LYNN, MASS.

— DEALER IN —

Leads, Oils & Glass.

Paper Hangings, Friezes and Mouldings

❖ A SPECIALTY. ❖

GO TO F. J. CUSHING'S

AND SEE THE

—❖— **Ideal Radiator** —❖—

FOR HOUSE HEATING.

F. J. CUSHING,

STEAM, GAS AND WATER FITTER

❖ 35 EXCHANGE STREET, LYNN. ❖



An Elegant Preparation for the Cure and Prevention of Pimples, Blackheads, Moth, Tan, Freckles, Wrinkles, Red, Coarse, Muddy or Oily Skins it has no equal.

To ladies who delight in a BEAUTIFUL COMPLEXION and soft, velvety cheeks, it is indispensable. Not sticky, greasy or visible; not a paint to cover up, but an absorbent cure, having all the advantages of arsenic as a beautifier with none of the dangers of its internal use. Endorsed by the beauty of the stage and society ladies everywhere. Mailed in plain wrappers for 50 cents per tube, stamp or postal note.

F. W. KIMBALL, 357 Washington Street, Boston, Mass.

JOSEPH BREED & SONS,
BUILDERS,

AND

— Dealers in Lumber —

41 Beach St.,

LYNN, - - - MASS.

DO YOU WANT TO KEEP BEES?

Send your address to

HENRY ALLEY, WENHAM, MASS.,

Essex County.

And you will get all the information required to commence Bee-keeping and make it a success.

Anyone can keep Bees and make it pay.

BEES, HIVES, and EVERYTHING NEEDED in Bee-keeping FOR SALE.

Pure Honey and Beeswax.

If the reader of this is in need of PURE honey or beeswax order of us and get just what you pay for.

R. E. HILLIARD
WHOLESALE DEALER IN

Shoes and Leather

WOMEN'S, MISSES', CHILDREN,
MEN'S,
BOYS' & YOUTHS'

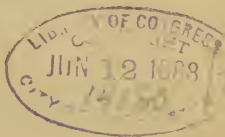
102 & 304 Union St.
LYNN, MASS.

V. S. Lynn Manual
The Lynn Manual

AND

Essex County Road Book

259
— CONTAINING —



*Map of the City of Lynn, * Complete Street Directory of Lynn,
Lynn Fire Alarm Telegraph, * Plan of Seats in Music
Hall, Lynn, * Principal Hotels in Essex
County, * Map of Essex County with the Names and
Location of the Principal Roads.*

LYNN :

E. F. BACHELLER, PUBLISHER,

1888.

F 94
-L 98 L 983



Entered, according to Act of Congress, in the year 1888, by
E. F. BACHELLER,
In the Office of the Librarian of Congress, at Washington, D. C.



U
S
C
O
P
Y

LYNN STREET DIRECTORY.

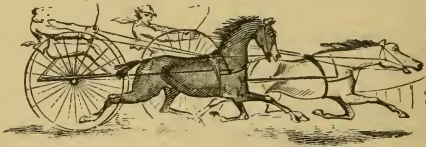
*Giving the location of the Streets, Places, Parks,
Squares, etc.*

- Abbott, from 19 Woodman to 104 Waterhill.
Abbott Court, from 362 Chatham.
Acorn, from 74 Hollingsworth to 15 High Rock.
Adams, from 308 Chestnut to Rockaway.
Albany, from 120 Franklin to 33 Arlington.
Albion, from 911 Western Avenue to 592 Summer
Alice, from 179 Essex to 48 Ingalls.
Allen, from 793 Western Avenue to the railroad.
Allen Avenue, from 116 Henry Avenue to 48 Bay View Avenue.
Allen's Court, from 18 Fayette Court to 80 Collins, Ward 3.
Allen's Court, from 37 South to 29 Edwards Court, Ward 6.
Alley, from 135 Blossom, crossing Shepard at 157.
Almont, from 323 Union to 62 Oxford.
Alton Court, from 8 Wheeler to the railroad.
Ames, from 772 Summer to the railroad.
Amity, from 81 Newhall to 72 Beach.
Andrew, from 50 Central Avenue, at Music Hall, to 98 Market.
Ann, from 14 Stickney to 33 Charles.
Apple, from 45 Rockland.
Arch, from 12 Washington.
Arlington, from 68 Baker to 548 Western Avenue.
Arthur, from 802 Summer to the railroad.
Ash, from 19 Elm to opp. 37 South.
Ashland, from 697 Summer to 634 Boston.
Astor, from 370 Summer to 53 Neptune.
Astor Court, from 28 Wheeler to the railroad.
Astor Hill Avenue, from 9 Acorn to 100 Hollingsworth.
Atherton, from Hesper, near Boston, southerly.
Atkins Court, from 32 Ocean.
Atkinson, from 81 Walnut to Linwood.

M. PLUMSTEAD & SON,

Manufacturers of and Dealers in

HARNESSES * OF * EVERY * DESCRIPTION



Whips, Robes, etc., etc.,

235 BROAD STREET,

LYNN, MASS.

**For Insurance in Reliable Companies,
FOR REAL ESTATE,
For Money on Real Estate Mortgages**

or

If you have Money to Loan on Real Estate

call at


The oldest and largest agency in Lynn,

316 Union Street,

SILSBEE & GEER.

- Atlantic, from 4 Broad to 215 Ocean.
Auburn, from 49 Lynnfield to 32 Bacheller.
Autumn, from 119 Lewis to 12 Bloomfield.
Avon, from John to Raddin's wharf.
- Bacheller, from 289 Broadway to 117 Lynnfield.
Bailey, from Pratt to 26 Lynnfield.
Baker, from 89 North Common to 88 Franklin.
Ballard, from Lincoln Avenue to Turnpike, East Saugus.
Baltimore, from 23 Atlantic to 62 Nahant.
Barker Court, from 58 Liberty.
Barrett, from Boston, between Park and Mall.
Barrett Court, from opp. 349 Boston.
Bassett, from 120 Lewis to 139 Ocean.
Batchelder's Court, from 124 Cottage.
Bates Court, from River, near Cooper.
Bay View Avenue, from 83 Hollingsworth to 340 Western Avenue.
Beach, from 226 Broad to Long Beach.
Beach Road, from 149 Nahant St. over Long Beach to Nahant.
Beach-St. Court, from 121 Beach.
Beacon Hill Avenue, from 277 Washington to 32 Bay View Avenue.
Beacon Hill Place, from 49 Allen Avenue.
Beckford Court, from 397 Essex.
Bedford, from 33 Blossom to 50 Shepard.
Bellair, from 406 Western Avenue to 16 Loughton.
Belle Avenue, from 22 Ashland to Summer.
Belmont Avenue, from 361 Walnut to Cypress Avenue.
Berkeley, from 775 Western Avenue to 33 May.
Bessie, from Silsbee Avenue.
Beyer Place, from 137 Lewis.
Bickerton, from 13 Granite to Granite, near Boston.
Birch, from 38 Cedar Hill Avenue across Clinton.
Blake, from 49 Central Square to Almont.
Blakeley, from Holyoke to Raddin's Court.
Bloomfield, from 53 Fayette to 68 Chatham.
Blossom, from 64 South Common to the water.
Bond, from 25 Pleasant to 46 Church.
Border, from the junction of Ashland and Summer to the mill pond.
Boston, from 668 Chestnut to Saugus river, old bridge.
Bowler, from 576 Chestnut to Collins Avenue.
Bowley Avenue, from 58 Flint to 61 Wyman.
Box Place, from 330 Broad.

Lynn Brass Foundry.



FINE BRASS CASTINGS

OF EVERY DESCRIPTION.

Gold, Silver, Bronze & Nickel-Plating

— AND —


POLISHING AT SHORT NOTICE.



WOOD AND METAL PATTERNS.



*We have just put in a fine plant for the above work
and will guarantee satisfaction.*



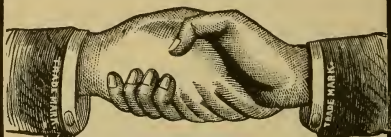
44 Farrar St.,

GEO. D. SARGEANT, }
A. F. HALLBAUER, } Proprietors.

Lynn, Mass.

- Boyce Court, from 174 Liberty.
Boyden Place, from 5 Silsbee.
Boynton, from Hudson to Mansfield.
Breed, from 218 Lewis to 195 Ocean.
Breed's Court, from 231 Broad.
Breed's Place, from 153 Broad.
Breed's Square, from 851 Western Avenue to 515 Summer.
Bridge, from 57 Waterhill to 510 Boston.
Brimblecom, from 52 Baker to 560 Western Avenue.
Broad, continuation of Lewis to Sea.
Broad-St. Place, from 12 Broad.
Broadway, from Peabody line to 668 Chestnut.
Broadway Place, from 325 Broadway.
Brook, from 103 Brookline to 102 Timson.
Brook Square, crossing of Franklin and Boston.
Brookline, from Swampscott line to 105 Chatham.
Brookline Court, from 117 Brookline to 120 Timson.
Brown's Court, from 254 Broadway, opp. H.R.R. depot, Wyoma.
Brown's Court, from 738 Boston.
Brownville Avenue, from 405 Essex to 26 Highland Avenue.
Bruce's Court, from 85 Fayette.
Buffum, from 263 Union and 4 Union Square to 26 Oxford.
Bulfinch, from 247 Boston.
Burchstead Place, from 173 Union.
- Cambridge, from 21 Oxford to 28 Liberty.
Camden, from 8 Ida to 13 Cooper.
Campbell, from 395 Broadway to Mansfield.
Canal, from 21 River.
Carlton, from Grant, near Rockingham.
Carnes, from 405 Boston to Winter.
Cedar, from 367 Boston to opp. 9 Salem.
Cedar Hill Avenue, from 25 Oakwood Avenue to 5 Marianna.
Cedar Lake, north side of Lynnfield.
Central Avenue, from Central Square to City Hall.
Central Place, from 10 Ellis to the railroad.
Central Square, junction of Union, Exchange, Railroad Avenue,
Willow and Central Avenue.
Centre, from 33 Market Square to Marion.
Chadwell Court, from 465 Summer.
Chancery Court, from 50 Sachem.
Chapman Place, from 51 Chestnut.

WELCOME



(TRADE MARK.)

SOAP

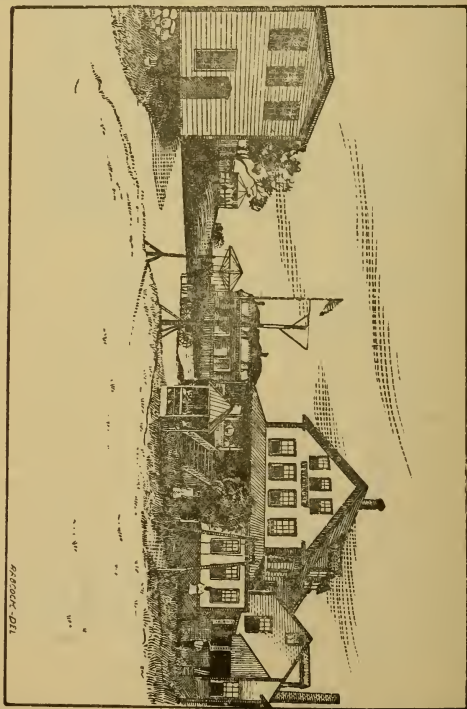
Acknowledged the "STANDARD" of LAUNDRY SOAP. There is but One. Every bar is stamped with a pair of hands, and no Grocer should be allowed to offer any substitute. In the use of **WELCOME SOAP** people realize "VALUE RECEIVED" and discover that superiority in WASHING QUALITY peculiar to this Soap.

- Charles, from 59 Prospect to 154 Commercial.
Charles-St. Court, from 19 Charles.
Chase, from 44 Hanover to 75 Baker.
Chase Avenue, from 921 Western Avenue to 602 Summer.
Chatham, from 85 Lewis to 122 Maple.
Chatham Court, from 445 Chatham.
Chatham Place, from 22 Chatham.
Cheever Place, from 459 Essex.
Cherry, from 180 Lewis to 169 Ocean.
Chestnut, from 227 Lewis to junction of Boston and Broadway.
Chestnut, from Franklin Square to Lincoln Avenue (East Saugus).
Chestnut Court, from 250 Chestnut to 43 Sheridan.
Childs, from 515 Boston to 43 Mace.
Chippewa Court, from 15 Lewis.
Chippewa Place, from Chippewa Court.
Choate, from 26 Oakwood Avenue to 17 Silsbee Avenue.
Church, from 52 South Common to the railroad.
Church Court, from 366 Broadway.
Church-St Place, from 20 Church.
City Hall Square, east end of the Common, near City Hall.
Cleveland, from 271 Western Avenue to 290 Maple.
Cliff, from 87 Walnut, opp. Water Works, to Linwood.
Clifton Avenue, from 82 Jackson to 12 Henry.
Clinton, from 31 Oakwood Avenue to Birch.
Clough, from Goldthwait to 473 Chestnut.
Clovally, from 190 Western Avenue to Goodridge.
Cobbett Place, from 41 Frankln.
Coburn, from 79 Essex to Webster.
Collins, from 7 Henry to 257 Chestnut.
Collins Avenue, from 325 Maple to Boston.
Collins-St. Court, from 89 Collins to Logan.
Columbia, from Swampscott line to H.R.R. stables.
Columbia Avenue, from Brookline to Swampscott line.
Commercial, from 192 South Common Street to West Lynn depot.
Commercial-St. Place, from 15 Commercial.
Congress, from 573 Western Avenue to 290 Boston.
Cook, from 69 Jefferson.
Cooper, from Western Avenue, near the bridge, to River.
Cottage, from 549 Summer to 576 Boston.
Court, from 30 Cottage to 54 Linden.
Crescent, from 23 Chatham to Phillips Avenue.
Crosby, from 49 Blossom to 68 Shepard.

"RELAY HOUSE,"

NAHANT, MASS.

The Famous Sea Shore Resort for Pleasure Seekers.



Grounds free for Picnic Parties. Plenty of Shades and Swings.
Good Stable and Bowling Alleys. Billiards and Pool. Skating Rink.

A. R. SEARLE, Prop.

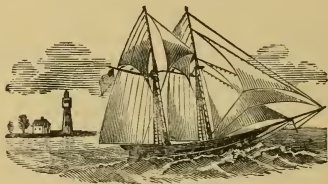
Cross, from 175 Western Avenue to 188 Maple.
Curve, from 52 Neptune to 143 Commercial.
Cypress Avenue, from Belmont Avenue to Oak.
Cypress Place, from 13 Bloomfield.

Dana, from 150 Essex to Williams.
Deer Cove Street, from Ocean, opp. Breed, to the Cove.
Deer Cove, foot of Deer Cove St.
Dennison Avenue, from 157 Maple to Gage's Court.
Douglas, from Roanoke to Savory.
Duke, from 64 Jefferson to 71 Adams.
Dungeon Avenue, from opp. 232 Walnut to Dungeon Rock.
Dungeon Pasture, near Dungeon Rock.
Dungeon Rock, at the head of Dungeon Avenue.

East Hollingsworth, changed to Hollingsworth.
Eastern Avenue, from Swampscott line to Western Avenue, near
Floating Bridge.
Eastlake Avenue, from 81 Chatham.
Edward's Court, from 768 Western Avenue.
Elizabeth, from 44 Linden to 50 Cottage.
Ellis, from 20 Silsbee to 21 School.
Elm, from 32 Market Square to 393 Summer.
Elmore, from 21. Ingalls to Clifton Avenue.
Elmwood Place, from 84 Johnson.
Empire, from B. & M. R. R. to 31 Sewall.
Endicott, from 145 Franklin to 344 Washington.
Essex, from Swampscott line to 2 Market.
Essex Avenue, from 230 Essex to 21 Sumner.
Essex Court, from 441 Essex.
Essex Place, from 357 Essex.
Estes, from 50 Howard to 23 Broad.
Etna Place, from 505 Boston.
Evelyn, from 44 Oakwood Avenue.
Everett, from 10 Lover's Leap Avenue to 8 Hancock.
Exchange, from 350 Union and Central Square to 173 Broad.
Ezra, from 36 Pinkham to Mailey.

Fairmount Avenue, from Oak, westerly.
Farrar, from 15 Newhall to 190 Broad.
Farrar-St. Court, from 19 Farrar.
Fay, from 68 Western Avenue to Saratoga.

Tarr's • Copper • Paint,



FOR VESSELS' BOTTOMS.

Warranted Best and Cheapest in the Market.

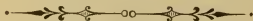
MANUFACTURED BY

JAMES H. TARR, Gloucester, Mass.

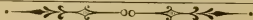
HOUGHTON & GODFREY,

25 EXCHANGE STREET,

— DEALERS IN —



Flexible Innersoles & Shoe Manufacturers' Supplies



Also, Wrapping, Drafting and Toilet Papers

Cotton, Flax, and Hemp Twines.

Near Central Depot, - LYNN, MASS.

- Fay's Avenue, from Western Avenue, beyond Floating Bridge.
Fayette, from 177 Lewis to Logan.
Fayette Court, from 171 Fayette.
Fayette Park, Fayette, at Goldfish Pond.
Fayette Place, from 40 Fayette to 57 Chestnut.
Fearless Court, from 73 Lewis.
Federal, from Market Square to 426 Boston.
Federal Square, junction of Federal and Waterhill.
Fenton Place, from 274 Fayette.
Fernald Court, from 30 Pearl.
Flint, from 533 Boston to 118 Walnut.
Floating Bridge, on Western Avenue, across Glenmere.
Florence, from 65 Gardiner to 54 Myrtle.
Forest, from 64 North Franklin to Grove.
Forest Garden Avenue, from 208 Lynnfield, west.
Forest Hill Avenue, from 59 North Franklin to Hancock.
Forest Rock, in Pine Grove Cemetery.
Foster, from 12 Nichols to 175 Ocean.
Franklin, from City Hall Square to opp. 200 Boston.
Franklin Avenue, from 15 North Common to 18 Franklin.
Franklin Place, from 198 Fayette to 235 Chestnut.
Franklin Square, junction of Lincoln Avenue and Chestnut, near the
bridge (East Saugus).
Franklin-St. Court, from 156 Franklin.
Fremont, from 25 Essex.
Fremont Court, from 25 Fremont.
Fremont Place, from 53 Fremont to opposite 39 Mudge.
French, from Goldthwait to 485 Chestnut.
Friend, from 63 Green to 62 Silsbee.
Friend-St. Place, from 18 Friend.
Fuller, from 26 Abbott to 7 Woodman.
Gage's Court, from 25 Lake Avenue to the ice-houses.
Gardiner, from 633 Boston to 72 Holyoke.
Garland, from 17 Bassett to 44 Cherry.
George, from 54 Warren to 329 Summer.
Gertrude, from 43 President.
Glenmere, Ward 2.
Glenmere Square, junction of Chestnut and Maple.
Glenwood, from 459 Chatham across President.
Glenwood Avenue, from Oak to Belmont Avenue.
Goldthwait, from 212 Western Avenue to Stacey's Brook.

SWEDISH REMEDIES.

LUNG BALSAM.

Positive Cure for all Lung Diseases.

SWEDISH COMPOUND.

For all Impurities of Blood, Liver and Kidneys.

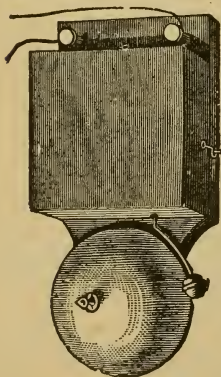
SWEDISH PILLS.

For Liver and Stomach Troubles.

FOR SALE AT THE

Beckford Pharmacy,

Wholesale and Retail, Lynn, Mass.; also by Druggists everywhere.



J. N. ORCUTT,

Bell • Hanger,

AND DEALER IN

Speaking Tubes, Window Shades,

ELECTRIC BELLS

AND

BURGLAR ALARMS.

Residence, 161 Chatham Street.

Office, 49 & 51 MUNROE ST.

- Goodridge, from foot of Clovelly to 443 Chestnut.
Goodwin's Court, from 35 Ingalls, opp. Porter.
Granite, from 405 Western Avenue to 158 Boston.
Graves Court, from 67 Pearl.
Grant, from 454 Chestnut to Bay View Avenue.
Green, from 106 Union to 33 Broad.
Greenwood Avenue, from Cliff, opp. the pond.
Greenwood Place, from 386 Essex.
Grove, from 349 Boston to 32 Forest.
Groveland, from 24 Empire to 10 Brook.
Grover, from 61 Hamilton to 109 High Rock.
- Hamilton, from 819 Boston.
Hamilton Avenue, from 253 Washington to 20 Bay View Avenue.
Hancock, from 25 Forest Hill Avenue to Pine Grove Cemetery.
Hanover, from 64 North Common to 274 Washington.
Hanover Court, from 107 Hanover.
Harbor, from 135 Pleasant to 176 Shepard.
Harbor-St. Place, from 62 Harbor.
Harrison Court, from 186 Market.
Harwood, from 101 North Common to 570 Western Avenue.
Hawthorne, from 40 Allen Avenue to Carlton.
Heffernan Avenue, from 101 Wyman to 106 Flint.
Henry, from 30 Marianna to 34 Clifton Avenue.
Henry Avenue, from 111 Johnson to Beacon Hill Avenue.
Herbert, from Hamilton Avenue to 71 High Rock.
Herbert Place, from 24 Herbert.
Hesper, from 799 Boston, near Sangus River, to Vinegar Hill.
Hesper Square, junction of Boston and Hesper.
High, from 33 Pearl to Highland Square.
High Rock Avenue, from 551 Essex to 69 Henry Avenue.
High Rock Court, from 16 High Rock Street.
High Rock Street, from 82 Rockaway to 51 High Rock Avenue.
High Rock, north side of Essex, near Highland Square.
Highland Avenue, from 377 Essex to 92 Adams.
Highland Grove, off Raddin's Court.
Highland Square, junction of Essex, Liberty and High.
Hill's Court, from 72 Church.
Hillside Avenue, from 1 Woodland Avenue to Swampscott line.
Hilton's Court, from 121 Shepard.
Hoag's Court, from 118 Commercial.
Hollingsworth, from opposite 23 Cook to 6 Herbert.

JOHN S. WRIGHT,
HOUSE & SIGN PAINTER

— DEALER IN —

— BUILDERS' HARDWARE, —

Paper Hangings, Leads, Oils, Colors,
Brushes, Glass, &c.,

COR. BROAD & SPRING STS.,
Lynn, Mass.

❖ **E. BAKER,** ❖

REAL ESTATE AND INSURANCE AGENT,

— AND —

AUCTIONEER.

Office, Room 5 Stevens' Building, Central
Square, Lynn, Mass.

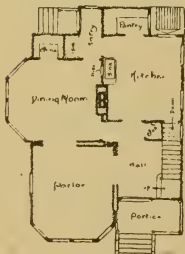
Mortgages Negotiated and Conveyancing Done.

NOTARY PUBLIC.

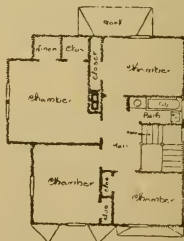
- Holyoke, from opp. 169 Walnut to Raddin's Court.
Hood, from 22 Allen to 55 Cottage.
Horgan's Place, from 15 Chippewa Court.
Hospital Avenue, from 199 Franklin.
Houghton Court, from opp. 21 Light.
Houghton Square, junction of Western Avenue and Summer.
Howard, from 88 Chestnut to 66 Green.
Hudson, from 435 Broadway.
Hudson Square, junction of Boston and Summer.
Hurley's Court, from 264 Broad.
Hutchinson's Court, from 24 Essex Court.
- Ida, from 965 Western Avenue to 26 River.
Independence Square, junction of Boston and Federal.
Ingalls, from 62 Jackson to 209 Chatham.
Ireson, from 133 Union to 394 Essex.
Ireson Avenue, from 107 Fayette to 118 Chatham.
- Jackson, from 117 Essex to Birch.
James, from 506 Essex to 25 Stewart.
Jefferson, from 340 Chestnut to 91 Rockaway.
Jefferson Square, junction of South and Ash.
Jeffrey, from 242 Broadway to Seldomgood.
Jeness, from 181 Broadway to upper end of Sluice pond.
Jewett's Court, from 52 Collins.
John, from 714 Summer.
Johnson, from 597 Essex to 98 Loughton.
Johnson Place, from 34 Johnson.
Jones Court, from Fay.
- King, from 74 Ocean to King's Beach.
King's Beach, east end of Ocean.
Kirtland, from 463 Boston to 28 Walnut.
- Laighton, from 426 Western Avenue to So. Franklin.
Laighton Court, from 55 Laighton.
Lake, from 28 Lake Avenue to 573 Chestnut.
Lake Avenue, from 165 Maple to Flax Pond.
Lakeside Court, from 92 Maple.
Lander, from 20 Howard to 36 Chestnut.
Lander Avenue, from 24 Estes to 27 Lander.
Lantern Rock, west side of Breed's Pond, near Dungeon Rock.

THIS COTTAGE CAN BE BUILT FOR

— \$ 1600. —



First Floor



Second Floor


EDWARD L. ROGERS,

13 CENTRAL SQUARE, - LYNN, MASS.

- Larrabee's Court, from 153 Lewis.
Laurel, from 622 Boston to the railroad.
Leavitt Place, from 419 Chatham.
Lee's Court, from 427 Chatham.
Lewis, from opp. 74 Ocean to Atlantic and Chestnut.
Lexington, from 473 Chatham to President.
Libby Court, from 343 Essex.
Liberty, from 496 Essex and Highland Square to 64 Market.
Liberty Square, junction of Union and Broad.
Light, from 546 Summer to Norton.
Light-St. Court, from 32 Light.
Lily, from 58 Sheridan to 54 Adams.
Lincoln, from 292 Essex to 11 Union.
Lincoln Avenue, from Franklin Square to Clifftondale (E. Saugus.)
Linden, from 60 Cottage to 613 Summer.
Linwood, from opp. 12 Walnut to Dungeon Avenue.
Linwood, Grove, near Forest.
Livingston, from 51 Oakwood Avenue.
Lloyd, from 204 Washington to 27 Johnson.
Lloyd Court, from 9 Lloyd.
Locust, from 610 Chestnut to Collins Avenue.
Locust Place, from 37 Chestnut.
Logan, from 291 Chestnut to 252 Fayette.
Long Beach, east end of Beach to Nahant.
Lover's Leap, north end of Grove.
Lover's Leap Avenue, from Forest to Woodlawn.
Lovett Place, from 78 Lewis.
Lowell, from 410 Summer, across Neptune.
Lowell-St. Court, from 74 Lowell to the marsh.
Lyman, from 113 Franklin to 318 Washington.
Lynnfield, from 317 Broadway to Lynnfield line.
- Mace, from 34 Robinson to 43 Childs.
Mace Place, from 32 Breed.
Madison, from 16 Livingston.
Mailey, from 34 Union to Ezra.
Mall, from 183 North Common to 360 Boston.
Mann, from Dungeon Avenue, near Dungeon Rock.
Mansfield, from 463 Broadway to Campbell, Ward 1.
Maple, from 61 to 345 Western Avenue, Ward 2.
Maple, from Winter, near Chestnut (East Saugus.)
Maple Place, from 306 Maple, Ward 2.

HANSON & BROWN,

SOLES * AND * LEATHER.



CUT TOP LIFTS A SPECIALTY

402-408 UNION STREET,

LYNN, - - - MASS.

S. N. BREED & CO.,



LUMBER DEALERS



BROAD AND BEACH STREETS,

LYNN, - MASS.

- Mariama, from 102 Jackson to 247 Fayette.
Marion, from 394 to 468 Boston.
Market, from City Hall Square, opp. City Hall, to Broad.
Market Place, from 23 Market.
Market Square, commencing at west end of the Common and running to Western Avenue.
Mason, from 165 Chestnut to Village Square.
May, from the railroad to 44 Waterhill.
Mechanics' Court, from 206 Essex.
Michigan Avenue, from 53 Ocean.
Milton, from Mudge.
Minot, from 880 Western Avenue to West Neptune.
Moose Hill or Proctor's Mountain, between Essex and Boston and Maine Railroad, near Swampscott line.
Morris, from opp. 73 Linden to 16 Cottage.
Moulton, from 389 Boston to Winter.
Mount Pleasant, from 329 Essex to Ridgeway.
Mount Pleasant Place, from 363 Essex.
Mount Vernon, from opp. 54 Silsbee to 52 Exchange.
Mountain Avenue, from 24 Essex, near Swampscott line, to Summit Avenue.
Mountain Court, from 50 Highland Avenue to 53 Rockaway.
Mudge, from 3 Essex.
Mulberry, from 293 Union to 48 Oxford.
Munroe, from 162 Market to 64 Central Square.
Murray, from the railroad to 62 Waterhill.
Myrtle, from 619 Boston to 232 Walnut.
- Nahant, from 96 Broad, at Washington Square, to Long Beach.
Nahant Place, from 34 Nahant.
Nelson, from 855 Western Avenue to 56 Hood.
Neptune, from 81 Vine to 130 South.
Neptune-St. Court, from 125 South.
New Chatham, from 296 Chatham to 128 Western Avenue.
Newhall, from 120 Broad to 150 Beach.
Newhall, from Vincent to Ballard (East Saugus.)
Newhall Avenue, from 323 Chatham to Ceder Hill Avenue.
Newhall Court, from 348 Essex.
Newhall Place, from 21 Newhall Court.
New Ocean, from Swampscott line to Ocean.
New Park, from 319 Boston to Forest.
Nichols, from 49 Cherry to 52 Breed.



NAHANT BEACH,

S. SOULE & SON, - PROPRIETORS.

NEW HOUSE. NEWLY FURNISHED.

Ten Minutes walk from B. & M. R.R.
Station in Lynn.

Special Attention to Summer Boarders.

*Telephone Connection. Horse Cars and Party Wagon
run direct to the House every 20 minutes.*

SAM'L SOULE. | P. O. Address, Lynn, Mass. | FRANK SOULE.

- Norcross Court, from 66 Lewis.
North Bend, from Boston, near Chestnut, to Boston, east of Pine Grove Cemetery.
North Common, north side of the Common, from Franklin to Market Square.
North Federal, from 435 Boston to Walnut and Winter.
North Franklin, from 227 Boston to Forest Hill Avenue.
North Franklin-St. Court, from 49 North Franklin.
Northern Avenue, from 31 North Franklin to North Franklin-St. Court.
Norton, from 66 Light, north and south.
Nottingham, from 272 Maple to 13 Grant.
- Oak, from Dungeon Avenue to 319 Walnut.
Oakwood Avenue, from 353 Chatham to Eastern Avenue.
Oakwood Place, from 31 New Chatham to 328 Chatham.
Ocean, from King's Beach at Swampscott line, to 86 Nahant.
Ocean Avenue, from 216 Ocean to Wave.
Olive, from 125 Chestnut to 88 Fayette.
Oneida Court, from 19 New Ocean.
Ontario, from 101 Linwood to Pine Grove Cemetery.
Orange Court, from 193 Fayette.
Orchard, from 484 Summer.
Orchard Place, from 347 Essex.
Orrin Court, from 32 Linden.
Otis, from 26 Pendexter to Wyoma.
Oxford, from 32 High to 134 Market.
- Palfray Place, from 407 Essex.
Park, from 145 North Common to 314 Boston.
Park Place, from 78 Henry Avenue to 30 Loughton.
Parrott, from 75 Fayette to 102 Chatham.
Pearl, from 430 Essex to Union Square.
Pendexter, from 221 Broadway to Savory.
Perley, from 601 Boston to Wilfred.
Philbrick Court, from 73 Walnut.
Phillips Avenue, from 59 Lewis.
Phillips Place, from 94 Lewis.
Pine Grove Avenue, from opp. 68 Linwood across Tapley.
Pine Grove Cemetery, entrance opp. 146 Boston.
Pine Hill, north side of Walnut, head of Federal.
Pinkham, from 66 Union to the railroad.

JOHN SHEEHAN,

CONTRACTOR

AND DEALER IN

Sods, Loam, Blue Gravel

AND

FILLING OF ALL KINDS.

*DRAIN LAYING & TAR CONCRETING
A SPECIALTY.*

585 WESTERN AVENUE,

Box 93 Mechanics' Exchange. LYNN, MASS.

- Pinkham Place, from 11 Pinkham.
Pirate's Glen, near Vinegar Hill (East Saugus.)
Pleasant, from 26 South Common to Sea.
Pleasant-St. Court, from 125 Pleasant to 136 Blossom.
Pond, from 599 Chestnut to 58 Lake.
Poquannum Hill, from Federal to Lover's Leap.
Porter, from 159 Essex to 30 Ingalls.
Porter Court, from 11 Porter.
Portland, from 22 Broad to 25 Baltimore.
Pratt, from 62 Lynnfield, west.
Pratt Place, from 141 Broad.
Prescott Place, from 174 Ocean.
President, from 60 Western Avenue to Glenwood.
Prince, from 82 Jefferson to 89 Adams.
Prospect, from 282 Summer to Boston & Maine railroad.
Prospect Court, from 48 Prospect.
Prospect-St. Place, from 51 Prospect.
Putnam Place, from 40 Ireson.
- Raddin, from 42 John.
Raddin's Court, from 745 Boston to 207 Holyoke.
Raddin's Grove, Ashland and Summer, opp. Raddin's station.
Railroad Avenue, from 2 Central Square to 17 Washington.
Railroad Court, foot of Neptune-St. Court.
Rand, from 590 Chestnut to Collins Av.
Ray's Court, from 153 South.
Red Rock, foot of Prescott Place.
Red Rock Street, from 8 Garland to 155 Ocean.
Relay, from 8 Northern Avenue to North Franklin-St. Court.
Rhodes Court, from 82 Western Avenue to 16 Saratoga.
Richmond Place, from 53 Pleasant.
Ridgeway, from 17 Rockland to 76 Adams.
Ridgeway Court, from 27 Ridgeway.
River, from opp. 613 Summer to Saugus River.
River-St. Court, from 63 River to the water.
Riverside Court, from Chestnut, opp. Vincent (East Saugus.)
Roanoke, from 44 Jenness to Pendexter.
Robinson, from 489 Boston to 52 Walnut.
Rockaway, from 413 Essex to Hollingsworth.
Rockingham, from 33 Grant to 272 Western Avenue.
Rockland, from 368 Chestnut.
Rockland, from 28 Mt. Pleasant to Ridgeway.

LYNN DYE HOUSE,

ALL KINDS OF

Dresses, Shawls, Damask Curtains, Plumes, Kid Gloves
Velvets and Store Goods, Cleansed, Dyed and Finished.

*Gentlemen's Garments Cleansed, Colored and Re-
Pressed in the Best Manner.*

GEO. H. JOHNSON, PROP.,

303 to 307 Market St., Lynn, Mass.,

6 Pleasant St., New Bedford, Mass.

STOMACH REGULATOR

OR

Dr. J. C. Weeks' Dyspepsia Cure,

For the cure of Dyspepsia, Sick Headache,
Distress after Eating, Acidity of
the Stomach, Flatulency, Gastritis and all
STOMACH TROUBLES.

Price 25cts. a Bottle.

Sold by all First-Class Druggists.

J. C. WEEKS & CO., Sole Proprietors,
131 CHATHAM ST., LYNN, MASS.

- Rockland Court, from opp. 27 Rockland.
Rogers Avenue, from 565 Essex, opp. Stewart, to 56 High Rock Av.
Rogers Place, from Rogers Avenue.
Russell Place, from 583 Essex.
- Sachem, from 26 Sagamore to 92 Newhall.
Sachem Avenue, from 36 Sachem.
Sadler's Rock, junction of Walnut and Holyoke.
Sagamore, from 79 Nahant to 48 Beach.
Sagamore Hill, near east end of Beach.
Salem, from 76 Grove to 79 Cedar.
Saratoga, from 501 Chatham to 37 Fay.
Sargent's Court, from 445 Boston.
Savory, from Jenness to Sluice pond.
School, from 186 Union to 41 Smith.
Sea, from 235 Market to 174 Pleasant.
Seldomgood, from 69 Maple, eastern side of Flax Pond, to Jeffrey.
Sewall, from 71 Jackson to Empire.
Shaw's Court, from 298 Essex, near Chestnut.
Sheep Rock, Northern Avenue, near Hancock.
Sheldon, from 190 Eastern Avenue to Coburn.
Shepard, from 118 South Common to the water.
Shepard Place, from 108 Shepard.
Sheridan, from 311 Essex to 26 Adams.
Sherman Place, from 23 Tudor.
Sigourney, from Walnut, near Saugus line.
Silsbee, from 256 Union to 119 Broad.
Silsbee Avenue, from 385 Chatham to Bessie.
Silsbee-St. Court, from 59 Silsbee to 106 Exchange.
Smith, from 160 Union to the railroad.
South, from 74 Market Square, across Neptune.
South-St. Court, from 111 South.
South-St. Place, from 58 South.
South Common, south side of the Common, from City Hall Square to Elm.
South Elm, from 394 Summer, across Neptune.
Spear, from Mann, east of Dungeon Rock.
Spring, from 41 Exchange to 215 Broad.
Stacey's Brook, from Glenmere to King's Beach.
State, from 171 Market to 114 Pleasant.
Stephen, from 40 Autumn to 29 Fayette.
Stephen Court, from 32 Stephen.

Lynn • Ice • Company,

WHOLESALE AND RETAIL DEALERS IN



— OFFICE —

Stevens Building, 343 Union Street, Room 13,

LYNN, MASS.

C. H. EDMANDS, *Pres.*,

ALBERT H. WYER, *Treas.*

S. S. MERRILL,

C. E. WHITTEN.



MERRILL & WHITTEN,

DEALERS IN

Bicycles & Tricycles,

Jersey Goods, Hose, Caps, and Cyclers' Supplies of Every Description.

Cigars and Tobacco.

Machine Jobbing, Bicycle Repairing a Specialty.

No. 8 Andrew St., - Lynn, Mass.

- Stetson, from 134 Boston.
Stewart, from 81 Liberty to 546 Essex.
Stickney, from 119 Vine to 128 Commercial.
Stone Place, from 164 Lewis.
Strawberry Avenue, from 192 Franklin to 276 Boston.
Strawberry Brook, from Wennuchus Lake to Saugus River.
Suffolk, from 31 Newhall to 30 Beach.
Suffolk Court, from 18 Suffolk.
Suffolk-St. Court, from 51 Suffolk.
Summer, from 107 Market to 712 Boston.
Summer Place, from 18 Sachem.
Summer-St. Place, from 450 Summer, next to railroad crossing.
Summit Avenue, from Mountain Avenue.
Sunner, from 132 Chatham to 123 Fayette.
Sutton, from 588 Essex to 161 Liberty.
Swampscott, fr Michigan Avenue to Swampscott.
- Tapley, from Woodlawn to Ontario.
Taylor's Court, from 134 Pleasant.
Thompson's Court, from 17 Chestnut.
Timson, from 123 Empire to 123 Chatham.
Tirrell's Court, from 38 Pleasant.
Tontoquon Hill, east of Lynnfield, near the head of Wyoma Lake.
Tower Hill, near the junction of Boston and Summer.
Town's Court, from 30 Pond.
Tremont, from 73 Market to 76 Pleasant.
Tremont Place, from 23 Tremont.
Tudor, from 127 Nahant to 172 Beach.
Tyler's Court, from 34 Bulfinch.
Tyler's Place, from 37 Bulfinch.
- Union, from 144 Chestnut to Liberty Square.
Union Court, from 59 Union.
Union Place, from 38 Union Court.
Union Rock, near Dungeon Rock, head of Dungeon Avenue.
Union Square, junction of Union, Pearl, Silsbee and Buffum.
Upland Place, from 50 N. Bend, junction of Boston.
- Valley Avenue, from 21 High Rock.
Villa Place, from 100 Shepard.
Village Square, junction Essex and Fayette.
Vincent, from Chestnut, across Lincoln Av. to Newhall (East Saugus)

\$100 REWARD!

If not cured by

Tuttle's Elixir.

FOR MAN AND BEAST

IT HAS NO EQUAL.



Rheumatism, Neuralgia
and all Joint Affections.

A sure cure for Colic in Horses, and Cholera Morbus and Diarrhœa in man. Don't fail to try it for Bone and Blood Spavins, Ringbones and Knotted Cords.

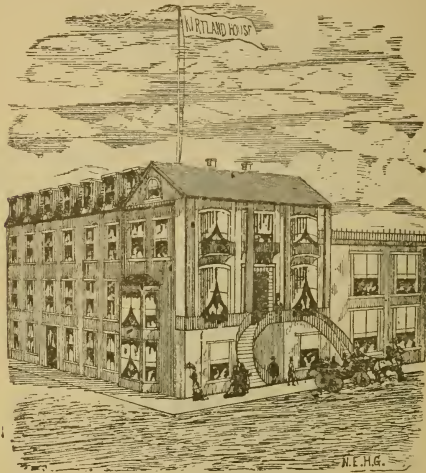
**Tuttle Manufacturing & Chemical Co.,
4 Merrimac St., Boston, Mass**

**N. J. Bacheller, Agent,
40 Broad St., Lynn, Mass.**

- Vine, from 138 So. Common to Stickney.
Vinegar Hill, from Hesper to Pirate's Glen (East Saugus.)
Violet, from 29 Pinkham to 42 Green.
Violet Court, changed to Pinkham Place.
- Waite's Avenue, from 60 Western Avenue.
Walden, from 780 Western Avenue to 481 Summer.
Walden Place, from 528 Summer.
Walnut, from head of North Federal to Saugus line.
Walter, from Webster, near Jackson.
Ward, from 12 Jefferson to 15 Adams.
Ward Place, from 191 Chatham.
Warren, from 33 Shepard to 60 Elm.
Warren Place, from 16 Warren.
Washburn, from opp. 21 Clinton to Livingston.
Washington, from 391 Union to 198 Boston.
Washington Court, from 228 Summer.
Washington Square, junction of Broad and Nahant.
Waterford, from Woodman to Waterhill.
Waterhill, from 96 Federal to Little River.
Wave, from 252 Ocean to Long Beach.
Waverley, from 273 Boston to 24 Bulfinch.
Webster, from 105 Jackson to Coburn.
Wellington, from 58 Oakwood Avenue.
Wells Court, fr 229 Chatham.
Wendall, fr Chestnut, across Lincoln Av. to Newhall (East Saugus.)
Wenuchus Square, junction Boston, Broadway and Chestnut.
West Baltimore, fr 61 Nahant to 50 Newhall.
Western Avenue, from Salem line to Saugus River.
West Green, fr 380 Essex to 115 Union.
West Neptune, fr 54 Light, north and south.
Wheeler, fr 113 Pleasant, across Church at 91.
Whiting, fr 117 N Common St. to 586 Western Avenue.
Wilfred, fr 53 Myrtle.
Williams, fr 141 Chatham to Empire.
Williams Court, fr 646 Boston.
Willow, Central Square to 86 Liberty.
Willow Avenue, fr 39 Chatham.
Wilson, fr 5 Hollingsworth.
Winslow Hill, fr 20 Roanoke.
Winter, fr Chestnut to Saugus (East Saugus.)
Winter, fr 69 No Federal to 60 Cedar.

ADVERTISEMENTS.

KIRTLAND HOUSE
62 Summer Street,
Lynn, Mass.



S. P. MILES, Proprietor.

J. D. DENNIS,

MANUFACTURER OF

CARRIAGES & SLEIGHS

Repairing and Painting

Of Light Carriages a Specialty.

274 BROAD STREET,

Lynn, Mass.

Winter-St. Court, fr Winter, opp. Carnes.
 Winthrop, fr Hancock to Woodlawn.
 Woodbine Avenue, fr Belmont Avenue to Oak.
 Woodend, Ward 3.
 Woodland Avenue, fr Eastern Avenue to Swampscott line.
 Woodlawn, from 3 Tapley to Winthrop.
 Woodman, fr Murray to Little River.
 Wyer's Court, fr 133 Maple.
 Wyman, fr 553 Boston to 132 Walnut.
 Wyoma, fr 249 Broadway to Otis.
 Wyoma Village, Ward 1.

— SEND 25 CENTS FOR A COPY OF —

We acknowledge the receipt of "Queer and Comical Rhymes," by Dabster Jones, published by E. F. Bacheller, Lynn, Mass. A perusal of them will cure the worst attack of melancholia.—INLAND PRINTER.



PUBLISHED BY
**E. F. BACHELLER, 40 Broad Street,
 Lynn, Mass.**

**FUN FOR THE MILLION !!
 A LAUGH ON EVERY PAGE.**

W. F. GOLDSMITH & Co.,

LYNN, - MASS.

Carpetings and Window Shades,

MOQUETTES, BRUSSELS,

TAPESTRIES & EXTRA SUPERS,

Rugs, Mats, &c.

IN addition to our Carpet Department, we have opened a DRAPERY PARLOR, where will be found a large assortment of TURCOMAN and TAPESTRY CURTAINS, CROSS STRIPES and TAPESTRIES by the yard; SWISS, MADRAS and NOTTINGHAM LACES in CURTAINS; also by yard for SASH CURTAINS; POLES, with TRIMMINGS, &c.

Carpet and Shade Work Done by Competent Upholsterer.

No. 273 Union St. 18-22 Buffum St.

LYNN FIRE ALARM TELEGRAPH.

LOCATION OF BOXES.

3. Wyoma Village, Boston st.
4. Maple, cor Chestnut.
5. Jackson, cor Essex.
6. Chestnut, cor Olive.
7. Lewis, cor Chatham.
8. Atlantic, cor Ocean.
9. Park, cor Western Avenue.
12. Lewis, near Chestnut.
13. Newhall, cor Sagamore.
14. Broad st., Tapley's Factory.
15. Rockaway, cor Essex.
16. Exchange, cor Union.
17. Boston, cor Franklin.
18. Bay View av., cor Hollingsworth.
19. Myrtle, cor Holyoke.
21. Market, cor Essex.
23. Market, cor State.
24. Neptune, cor Commercial.
25. Commercial, cor Charles.
26. Blossom, cor South Common.
27. Boston st., near Almshouse.
28. Shepard, cor Summer.
29. Pleasant, cor. Bond.
31. Boscobel Hotel, Market sq.
31. Federal-st. Engine House.
32. Federal, cor Marion.
34. Western av., cor Summer.
35. Boston, cor Hesper.

ONONDAGA BRAND

ALL READY FOR USE.



KEEPS IN ANY CLIMATE

CONDENSED MINCE MEAT.

Delicious and Economical.

JAMES CHASE & Co.,

CUSTOM TAILORS,

AND DEALERS IN

GENTS' FURNISHING GOODS.

294 UNION STREET, - LYNN.

36. Loughton, cor Washington.
37. Tapley st., near Pine Grove av.
38. Summer, cor. South.
41. Washington, cor Munroe.
42. Broad-st. Engine House.
43. Washington sq., Broad.
45. Green, cor Howard.
46. Blossom, cor Alley.
47. Electric Light Station, Stewart st.
51. Collins, cor. Chatham.
52. Essex st., near City Stable.
53. Western av., cor Chatham.
54. Fay Estate, Spring Pond.
56. Highland Square, Essex st.
57. Essex, near Fremont.
58. Chestnut, near Adams.
61. Union, cor Pearl.
62. Baker, cor Brimblecom.
63. George and Warren.
64. Grove and Salem.
65. North Common, opp. Park st.
71. Pevear's Morocco Factory.
72. Oakwood av. and Clinton.
73. Engine House, Fayette and Essex.
74. Union and Green.
75. Chatham st., near railroad crossing.
81. Cobbet School-house, Franklin st.
82. Corner Lewis and Ocean sts.
112. Andrew st., near Music Hall.
113. Cottage st., near Waterhill.
114. Western av., opp. Car Stable.
121. Hamilton and High Rock Avs.



REVERE HOUSE

N. J. WALES, PROPRIETOR,

At terminus of B., R. B. & Lynn Railroad.



235 MARKET STREET, LYNN, MASS.

V. N. COX, CLERK.



LIST OF PRINCIPAL HOTELS

*To be found in the cities and towns of Essex Co.,
Mass., giving name of proprietor.*

- Amesbury, American House, H. C. Moore.
Andover, Mansion House, C. L. Carter.
Beverly, Hotel Trafton, D. L. Trafton, opp. B. & M. R. R.
depot.
Boxford, Reddington House, D. S. Gillis.
Bradford, no hotel.
Danvers, Danvers Hotel, E. A. Southwick.
Essex, no hotel.
Georgetown, Pentucket House, Main and North sts., Wm.
H. Benson.
Gloucester, Pavilion Hotel, W. P. Davis; The Bass Rock
House, F. H. Nunns.
Groveland, no hotel.
Hamilton, Chebacco Hotel, John Whipple.
Haverhill, Hotel Webster, Washington Square, J. L. Bart-
lett.
Ipswich, Agawam House, No. Main st., J. F. Spinney.
Lawrence, Central House, opp. depot, Joseph Butterworth;
Franklin House, opp. B. & M. R.R. depot, Mrs. C. E. Huse.
Lynn: REVERE HOUSE, 235 Market street, N. J. Wales;
(see page 38.)
Sagamore House, 285 Union street, O. S. Roberts.
KIRTLAND HOUSE, 62 Summer street, S. P. Miles; (see
page 32.)
HOTEL NAHANT, Long Beach, S. Soule & Son; (see
page 22.)
The Prescott, Red Rock Point, off Ocean Street.

DON'T SPEND A CENT
— FOR —
CROCKERY, GLASS or CHINA,

UNTIL YOU HAVE CALLED AT
GEO. F. HARWOOD'S,
65 Central Avenue and 104 Washington Street,
AND GET HIS PRICES.

—o:0:0—
Agent for C. F. Treat, coal and wood. (Opp. P. O.)

C. F. TREAT,
COAL AND WOOD.

—◆—
WHARF:
PLEASANT, FOOT OF SEA STREET.

—●—
OFFICE:
65 Central Avenue (opposite P. O.)

- Lynnfield, Lynnfield Hotel.
 Manchester, Manchester House; Masconomo Hotel, J. B. Schofield.
 Marblehead, Clifton House, Ware & Rose.
 Marblehead Neck, Nanepashemet Hotel, Dr. Ammi Brown.
 Merrimac, Prescott House, Main street, J. E. Prescott.
 Methuen, Exchange Hotel, opp. P.O., Herbert Gray.
 Middleton, no hotel.
 Nahant: RELAY HOUSE, A. R. Searle; (see page 10.)
 Newbury, Plum Island Hotel.
 Newburyport, Merrimac House, J. A. Shattuck.
 North Andover, Merrimac Hotel.
 Peabody, Baldwin's Hotel, Foster street, W. H. Baldwin.
 Rockport, Sheridan House; The Linwood Hotel, Pigeon Cove Village, James Hurd.
 Rowley, Eagle House, Main street, A. Perley.
 Salem, Essex House, W. W. Davis; Central House, opp. B. & M. R.R. depot, Mrs. M. Collins.
 Salisbury, Seaside House, H. Littlefield.
 Saugus, no hotel.
 Swampscott, Lincoln House, Wardwell Bros.; Ocean House, R. W. Carter & Co.
 Topsfield, Topsfield House, D. J. Carlton.
 Wenham, (See Hamilton.)
 West Newbury, no hotel.



MEN'S, YOUTHS', BOYS AND CHILDREN'S
FINE, MEDIUM AND LOW GRADE CLOTHING.

Uniforms supplied to the G. A. R., Policemen, Firemen,
etc. Bicycle Outfits, Tennis Suits, Base Ball Suits, Office
Coats, Neckwear, Gloves, Hosiery, Shirts.

OUR HAT DEPARTMENT

is one of the largest and most important branches of our
business. Every standard make carried in stock, in full line
of colorings and shapes, at CUT PRICES.

W. M. CURRIER & CO.,
329-331 UNION ST., LYNN.

PLAN OF SEATS

MUSIC HALL, LYNN.

STAGE.

ORCHESTRA.

619-624

625-630

631-636

637-642

643-648

649-654

655-660

661-666

667-672

673-678

679-684

685-690

691-696

697-702

703-708

709-714

715-720

721-726

727-732

733-738

739-744

745-750

751-756

757-762

763-768

769-774

775-780

781-786

787-792

793-798

799-804

16 3

7 11

16 12

17 22

128 23

129 34

140 35

141 46

152 47

153 58

163 59

164 69

175 70

176 81

187 82

188 93

189 94

160 105

110 106

111 116

122 117

123 128

124 129

1135 140

146 141

147 152

159 153

158 161

166 162

171

186

187

202

203

218

219

234

255

250

251

266

267

282

283

298

299

314

315

330

331

346

347

362

363

378

379

394

178

179

194

195

210

211

226

227

242

243

258

259

274

275

290

291

306

307

322

323

338

339

354

355

370

371

386

387

195

410

411

426

427

442

443

458

459

474

475

490

491

506

507

522

523

538

539

554

555

570

571

586

587

602

603

618

102

409

418

419

434

435

450

451

466

467

482

483

498

499

514

515

530

531

546

547

562

563

578

579

594

595

610

611

631

641

642

653

654

665

666

677

678

689

690

701

702

713

714

725

726

737

738

749

750

761

762

773

774

785

786

797

798

EXIT

EXIT

EXIT

ENTRANCE

FOR FINE GOODS



— IN —

SOLID GOLD, SILVER

AND THE VERY BEST

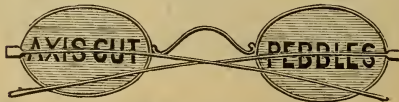
PLATED WARE,

— REMEMBER —

JAMES H. CONNOR,

(Successor to Geo. H. Howe & Co.)

81 PEARL STREET, - - LYNN, MASS.



A full line of Spectacles and Eyeglasses on Hand.

*Fine Repairing on Watches, Clocks and Jewelry
All Goods Sold Engraved Free.*

PLAN OF SEATS MUSIC HALL, LYNN.

STAGE.

E. F. BACHLELLER, 40 Broad St., Lynn.

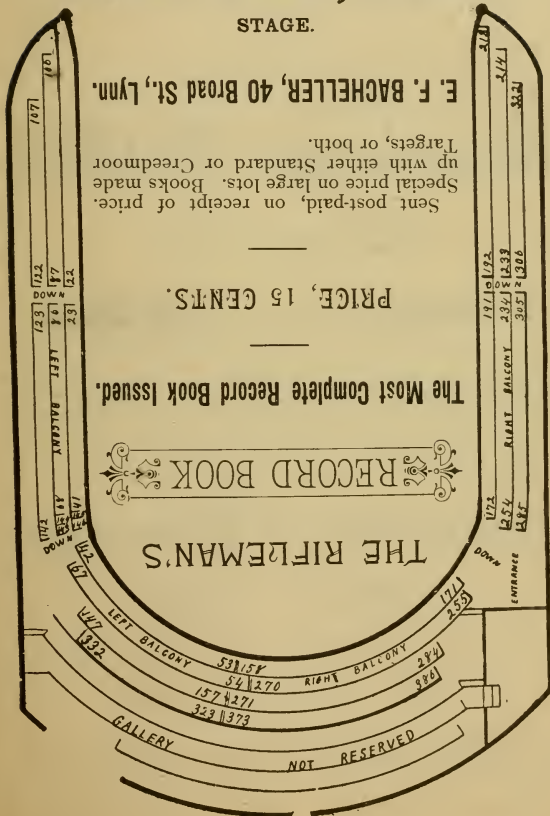
Sent post-paid, on receipt of price.
Special price on large lots. Books made
up with either Standard or Creedmoor
Targets, or both.

PRICE, 15 CENTS.

The Most Complete Record Book Issued.



THE RIFLEMAN'S



GOLDTHWAIT'S LIVERY

— AND —

Boarding • Stable,

Rear Central Depot,

LYNN, - - MASS.

DANIEL EMERSON, M. D. V.,

(Graduate Harvard University, Veterinary Dept.)

— Veterinary • Surgeon, —

LYNN, - MASS.

—
OFFICE.

J. W. GOLDTHWAIT'S STABLE.

Near Central Depot, - - - Union Street.

The Largest and most Extensive Furniture Establishment in Essex County.

G. B. FRENCH & Co.,

271 UNION STREET and 8-10 BUFFUM STREET,
LYNN, - MASS.

We carry the largest and most fashionable stock of

Furniture and House Furnishing Goods

IN ESSEX COUNTY,

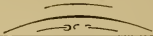
and we flatter ourselves in giving the most value for the least money.


AND WHY?

Because we don't want the earth, and we buy our goods at the

LOWEST CASH PRICE

and are willing to sell to our customers at a very small margin. Come and satisfy yourselves that we can give you your money's worth.





WE INVITE YOUR ATTENTION


— TO OUR STOCK OF —



DRY & FANCY GOODS



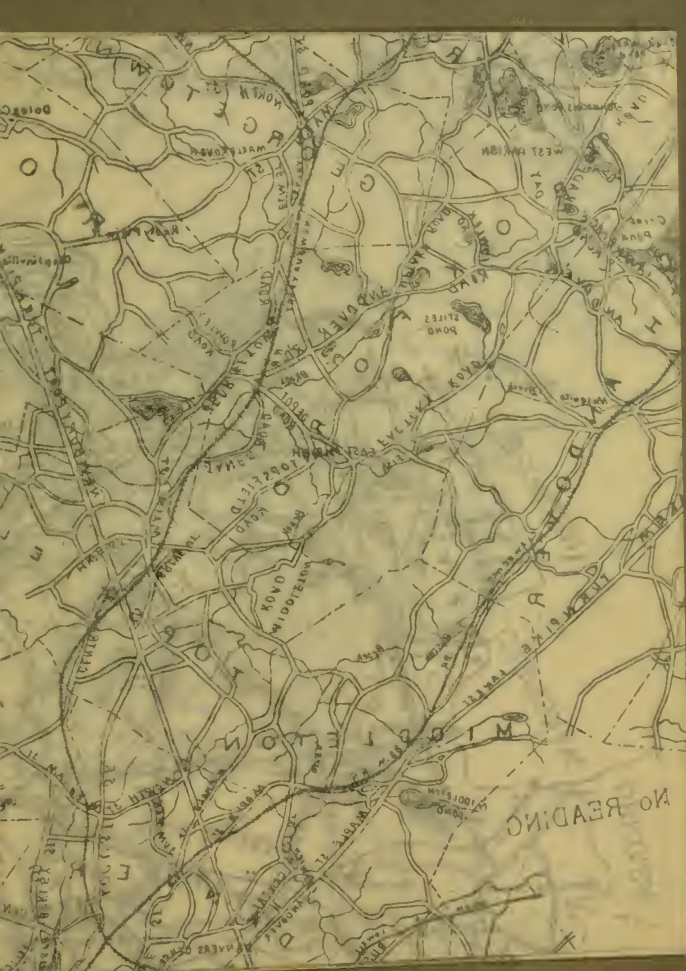
CARPETS,
UPHOLSTERY GOODS,
AND WALL PAPERS.



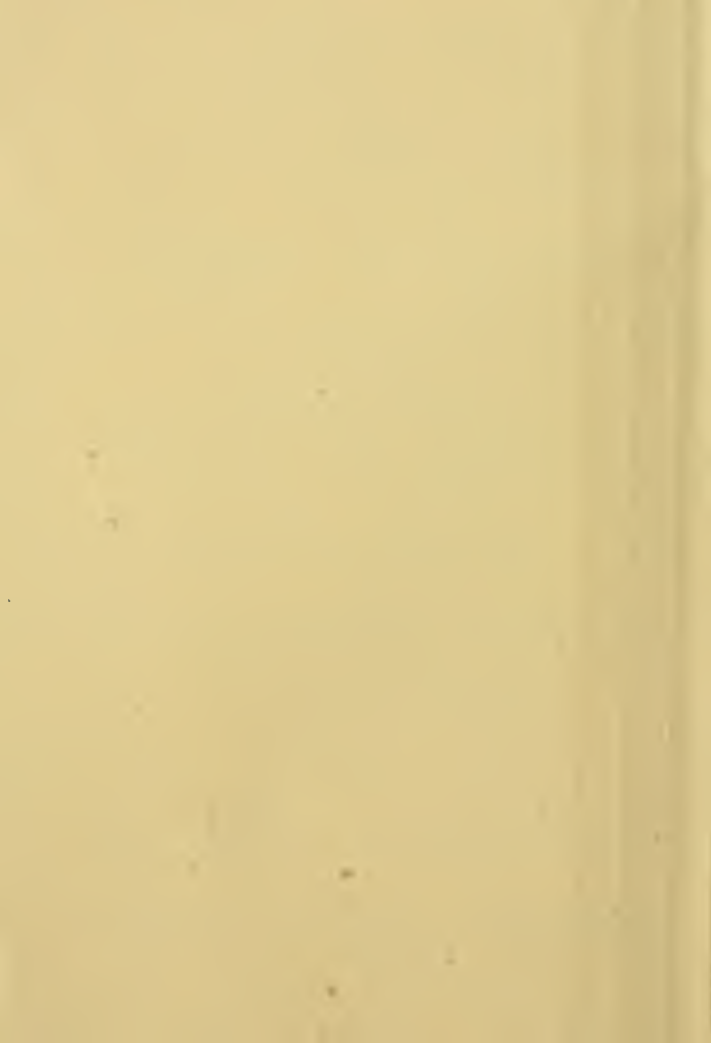
W. B. GIFFORD & CO., Market St., Lynn.





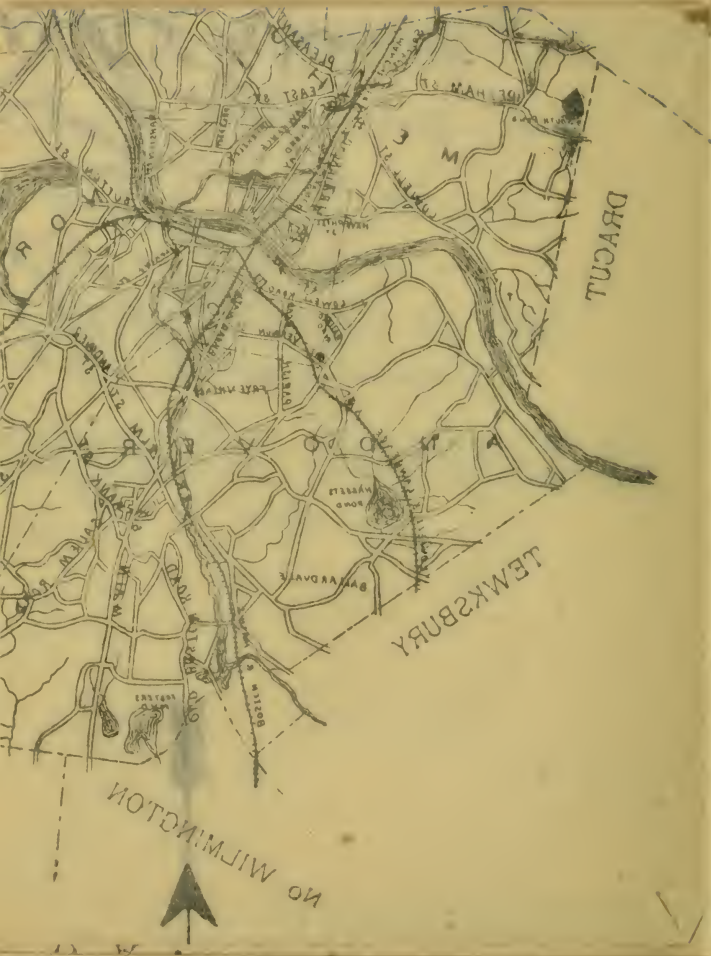


NO READING





**Fold-out
Placeholder**



DRACUT

LEWKS'BURY

NO WILMINGTON



PLEASANT ST

EAST ST

107 HAM ST

MERRILL ST

HARRISON ST

HARRISON ST

EAST AVENUE

ROAD

BARRARD AVE

MILLS ST

107ERS

WENTWORTH'S SPECIALTIES.

LADIES' TENNIS OXFORDS.

Ladies', Misses' and Children's CANVAS BOOTS for Summer Wear.

Hand and Flexible Sewed OXFORD TIES.

The "WENTWORTH" Flexible Sewed Button Boot, in Common Sense (*see cut*) and Opera Toe.

The most comfortable boot made for Ladies, Misses and Children.



Gentlemen's, Hand-Sewed Calf, Dongola and Kangaroo Shoes, in every style. Gentlemen's, Boys and Children's Tennis Oxfords. Men's extra wide Easy Shoes for tender feet, and a general assortment of all kinds of Boots, Shoes and Rubbers usually found in a first-class shoe store.

C. A. WENTWORTH, 274 Union Street, Lynn.

LIBRARY OF CONGRESS



0 014 069 195 3

STATEMENTS

400 Broad St., Lynn, Mass.

CIRCULARS

BOOK & JOB PRINTING

Promptly Executed.

Every Variety of

G. F. Babelier,

NOTE HEADS

LEADS